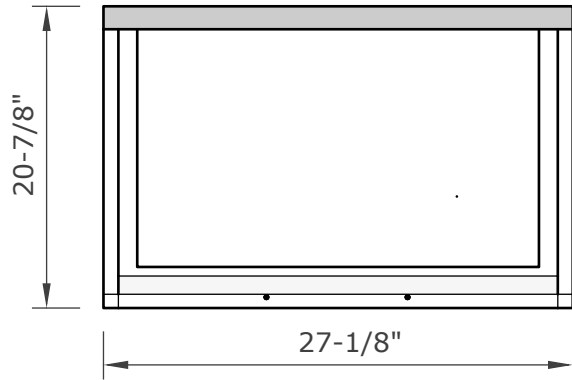


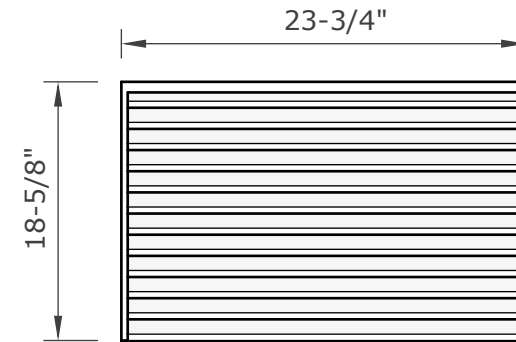


V2VENTS.COM (916) 652-7424 info@vulcanvents.com P.O. Box 1126 Loomis, CA. 95650

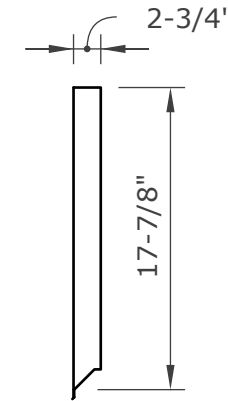
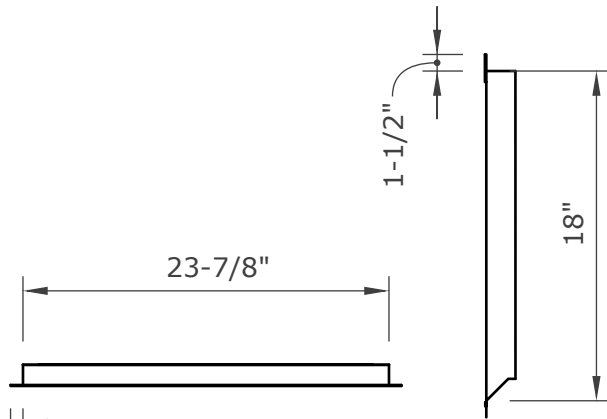
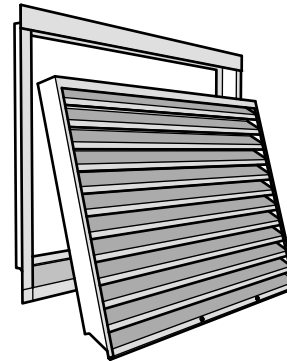
For use to comply with IWUI, IBHS Wildfire Prepared Certification, California Chapter 7A*



Frame Only - front view



Vent Door - front view



Vent Door - side view

Required Installation:

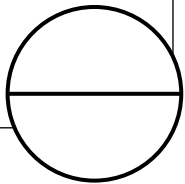
Use **EverKem 814+ intumescent firestop caulking** or equivalent, BEHIND flanges.
For application details and installation examples, please visit www.v2vents.com

NOTE:

Frame Only profile views fits through opening

Proudly Manufactured By: **NEW CAL METALS INC.**

www.newcalmetals.com



FSVFS1824AV PRODUCT SPECIFICATION & DATA SHEET

Model Description	Access Vent	Flange Type	Flange Front	Frame & Flange	G90 Galvanized Steel - 26GA
Model Number	FSVFS1824AV	NFVA	177 sq. in.	Intumescent Core	5mm Hexagonal Matrix - Aluminum with intumescent coating
Model Size	18" X 24"			Ember Mesh	14 Mesh - 304 Stainless Steel